

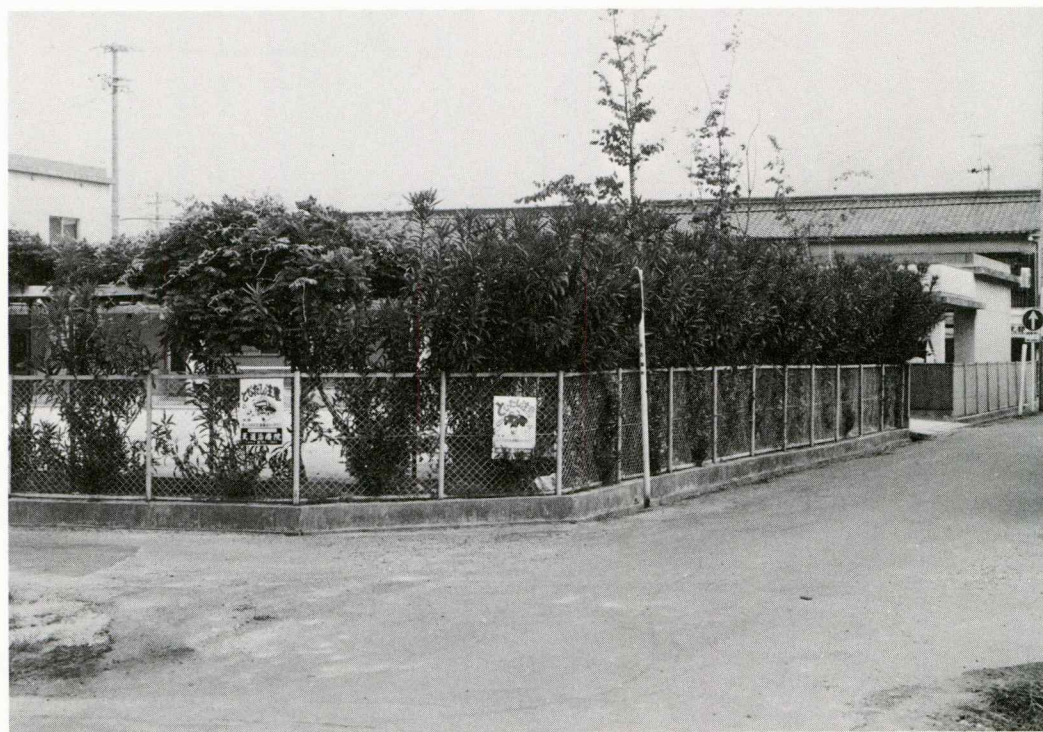
圖 版

PL. I

図版一
遺跡の遠景(一)

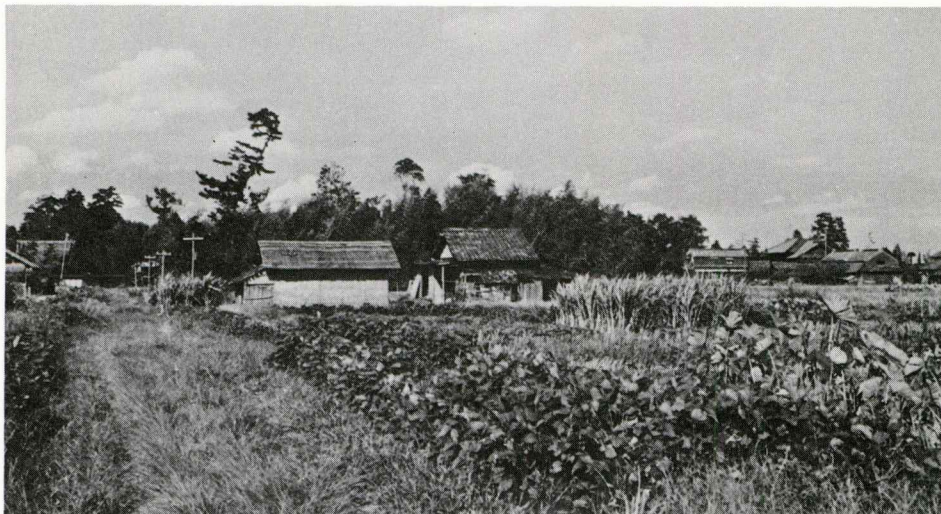


1. 発掘当時の全景 北西より

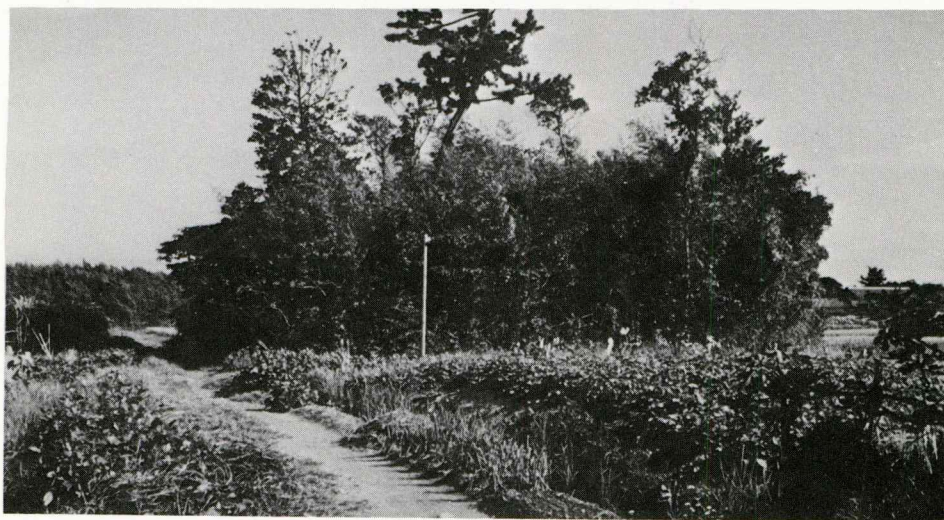


2. 現在の状況 北西より

1 東南より

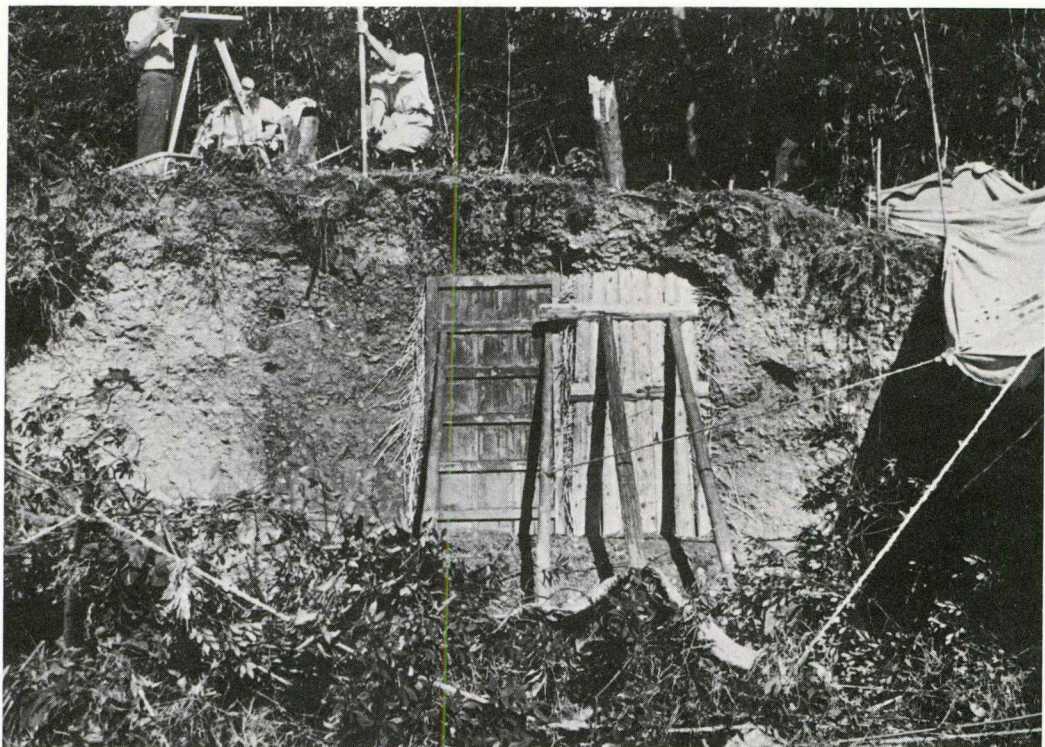


2 西南より

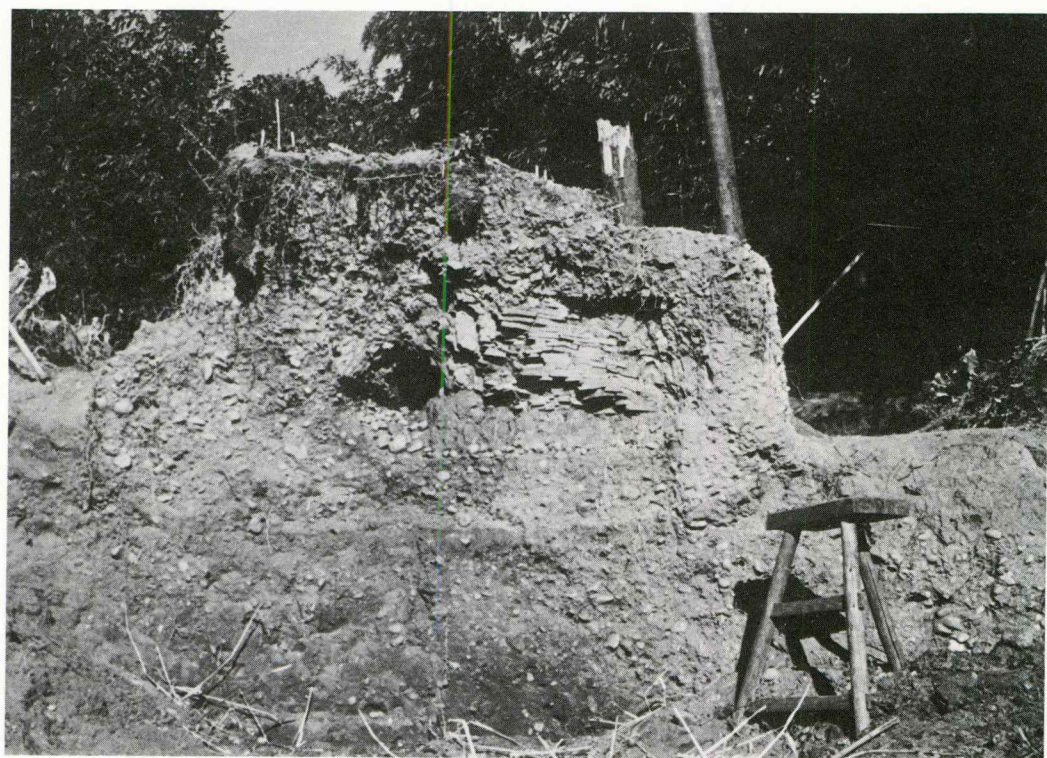


3 東北より





1 西方より



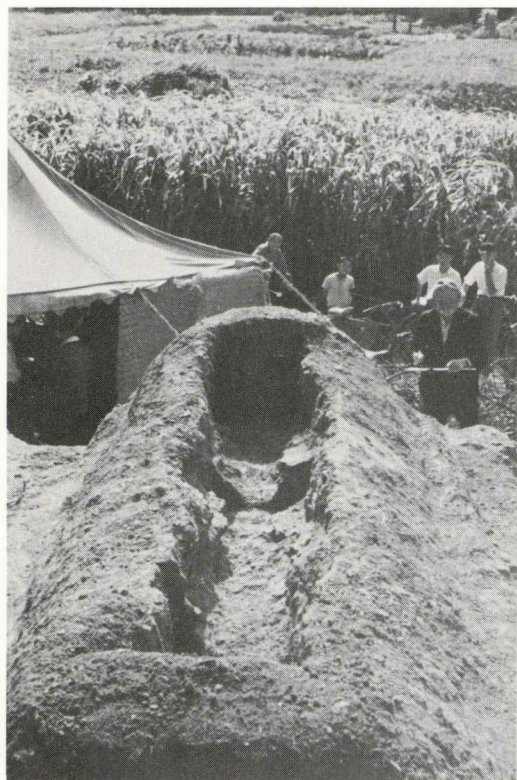
2 西埦壁



1. 粘土槨の東端



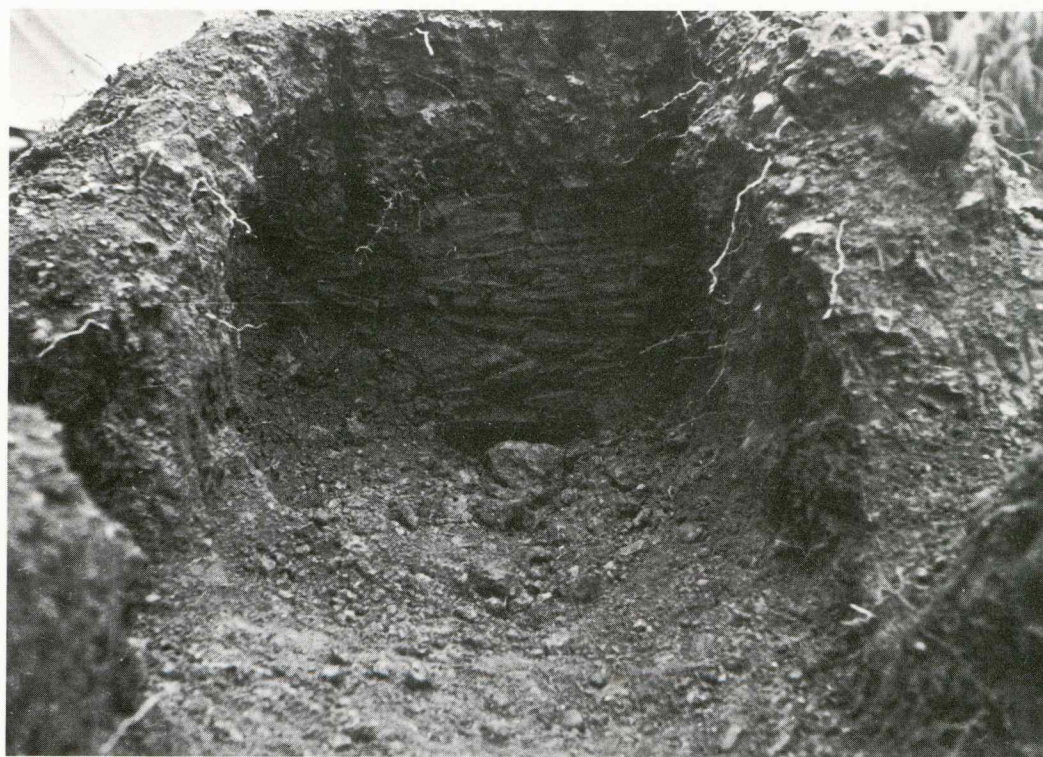
2. 粘土槨の西端



1. 全 景



2. 東壁内部



3. 西壁内部



1. 西 壁



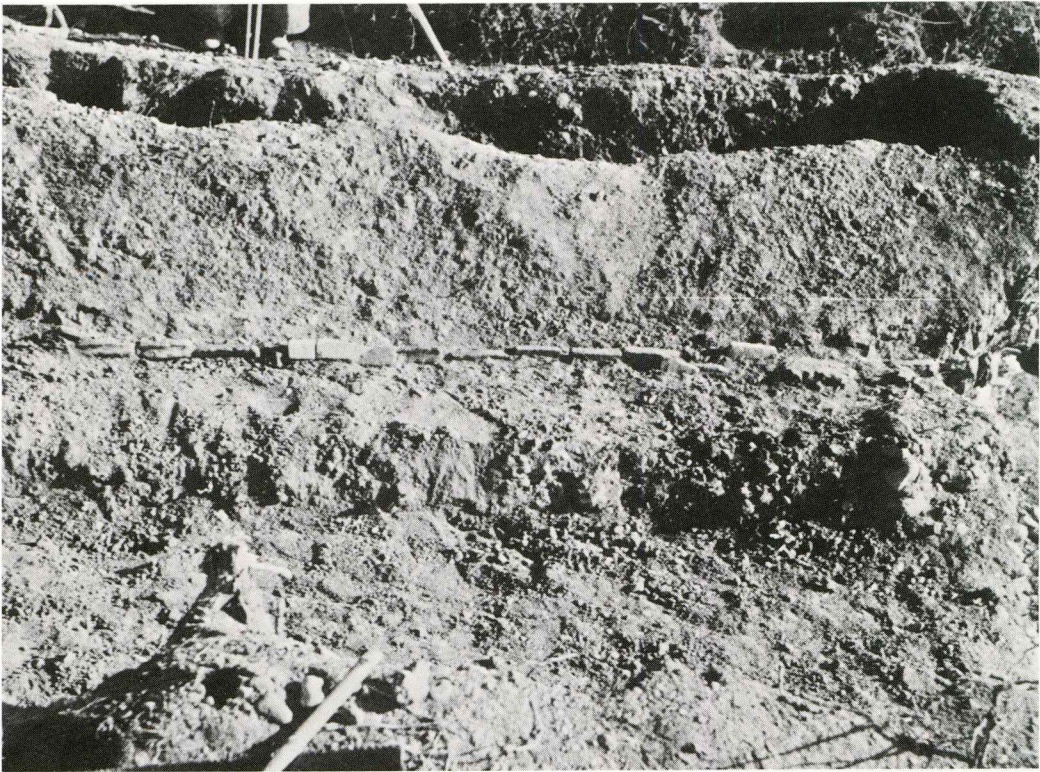
2. 西壁の拡大



1. 副葬品室と西壁



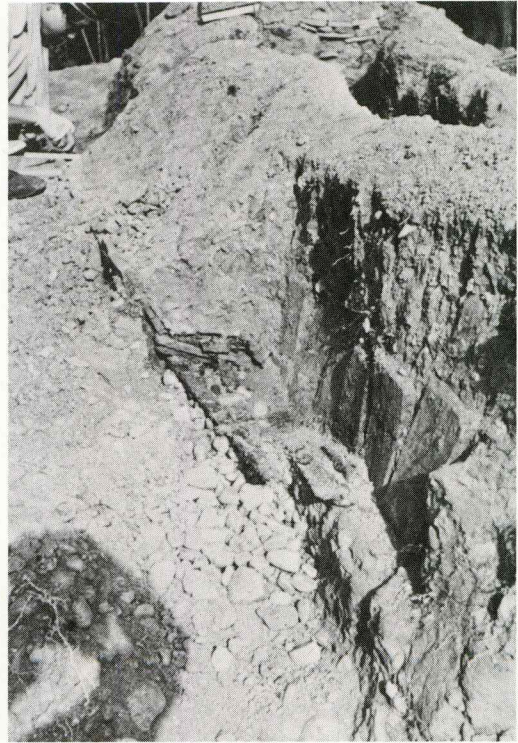
2. 副葬品室の塙と礎床



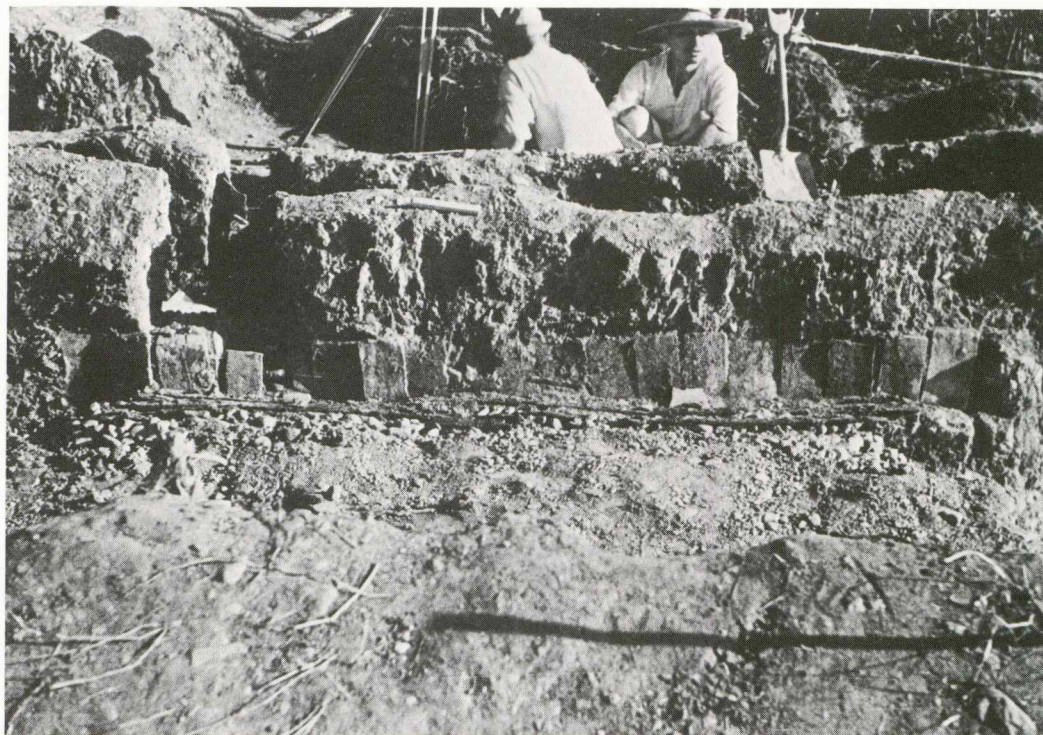
1. 北より望む



2. 西より望む

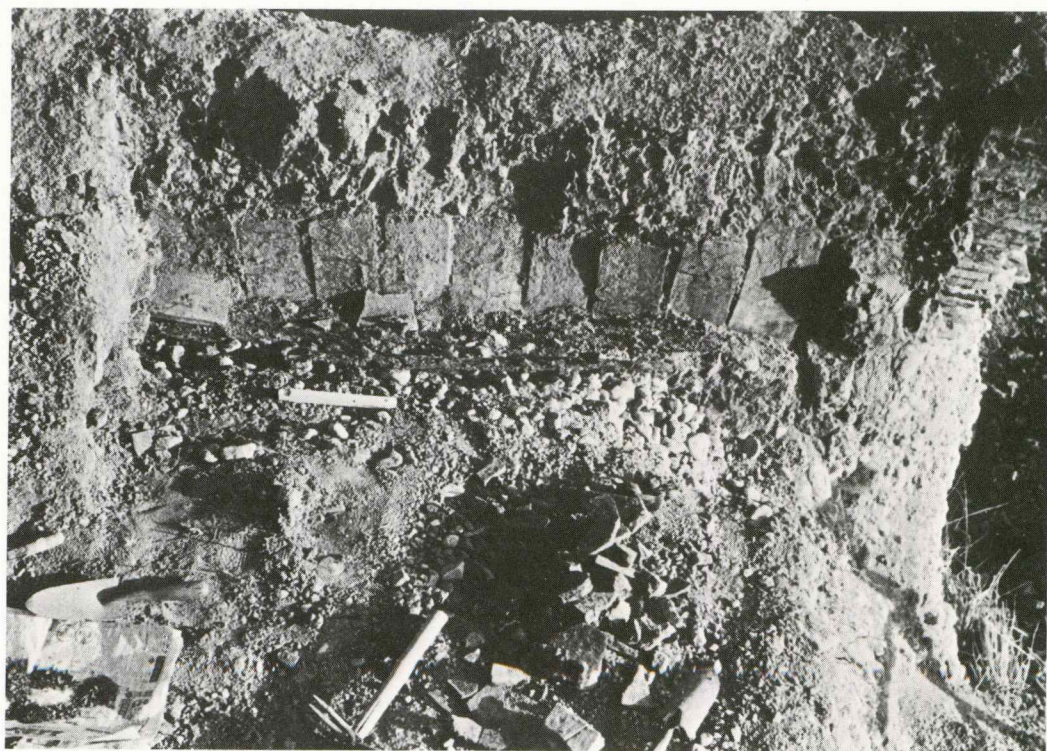


3. 北西より望む



図版九 副葬品室の遺物出土状況(一)

1. 北より望む



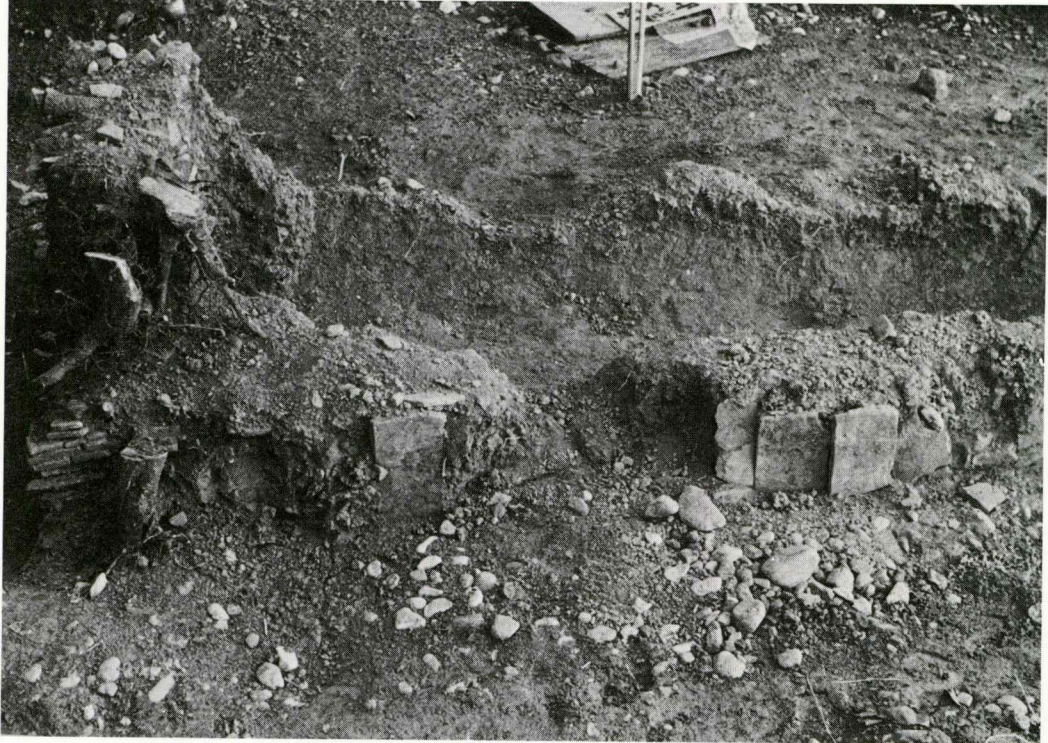
2. 北より西半分を望む



1. 北東より望む



2. 素環頭大刀の出土状況



図版一一 副葬品室と粘土槨内部(一)

1. 北東より望む



2. 槨内部を東方より望む

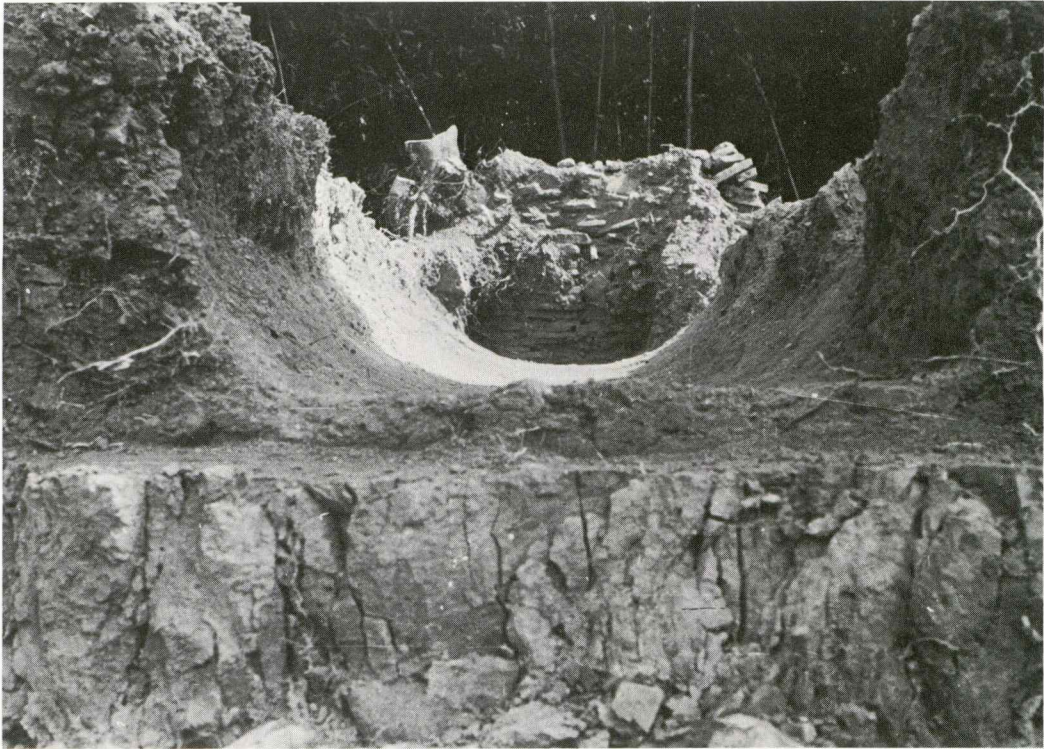


図版一二 副葬品室と粘土槨内部(二)

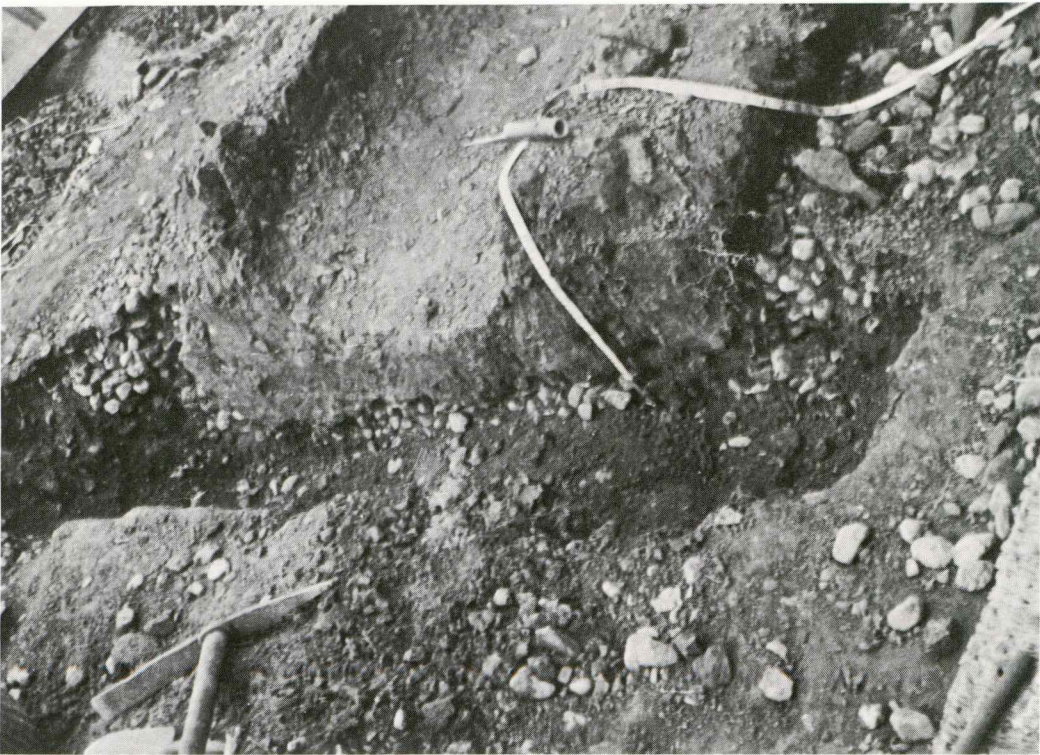
1. 西より東壁を望む



2. 東より西壁を望む



1. 粘土床と槨内部

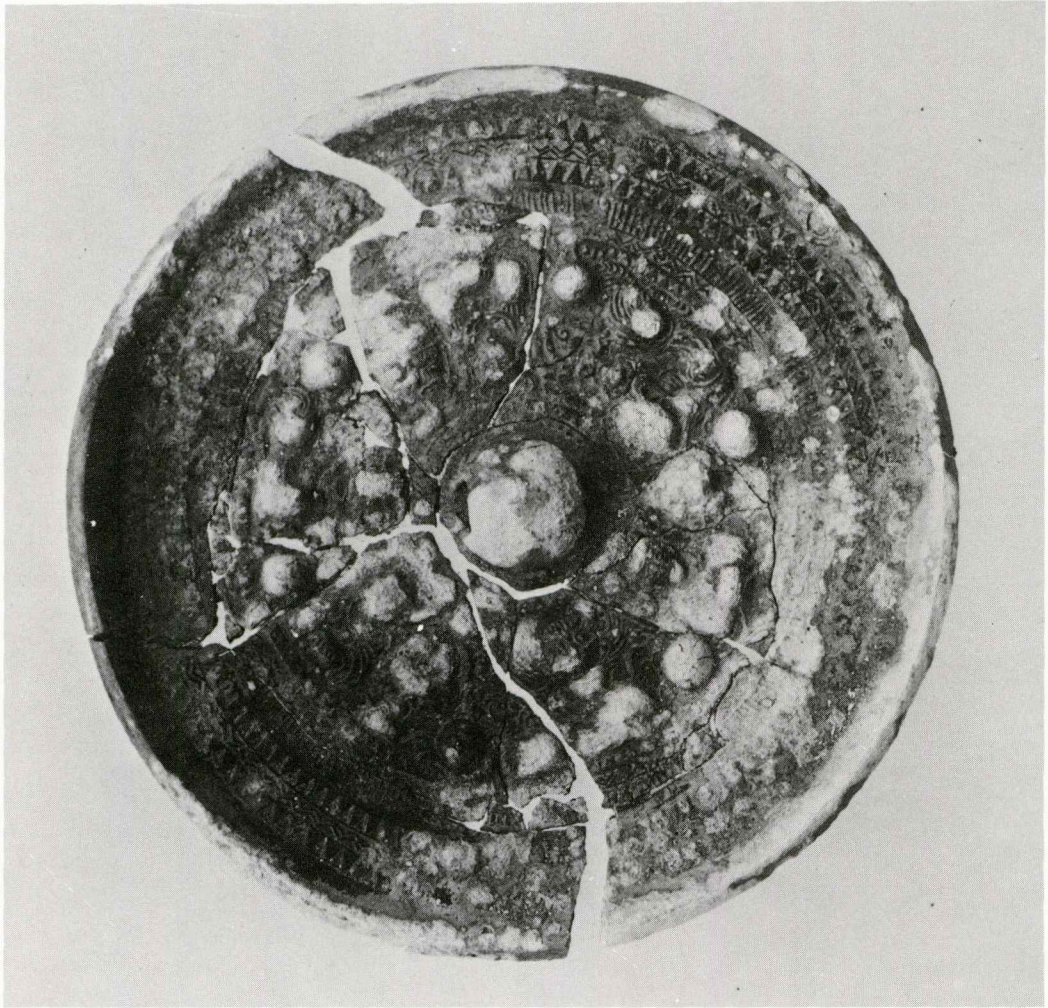


2. 粘土 郭と礫床



図版一四 主体部の遺物出土状況

鏡と大形管玉

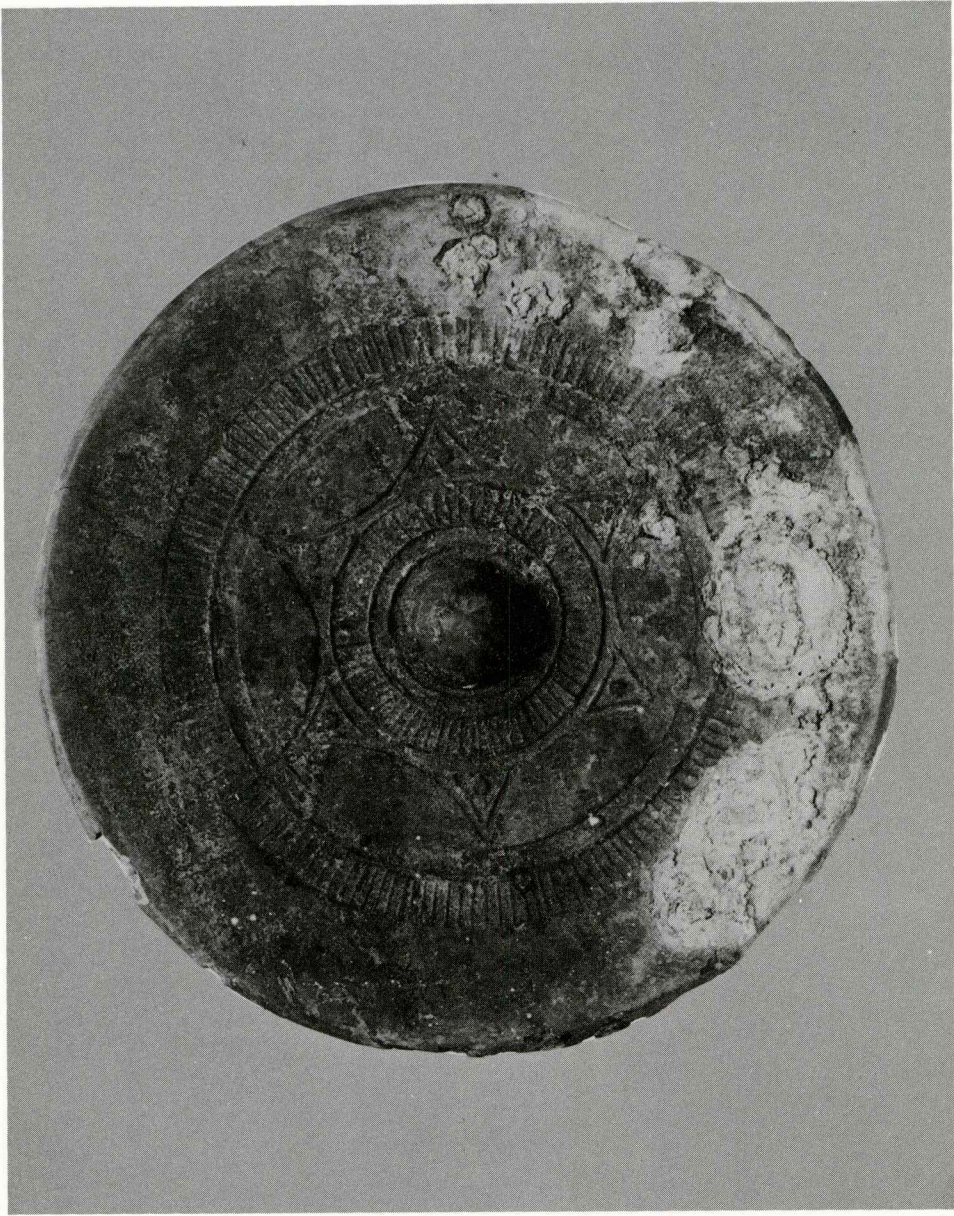


図版一五出土遺物(一)

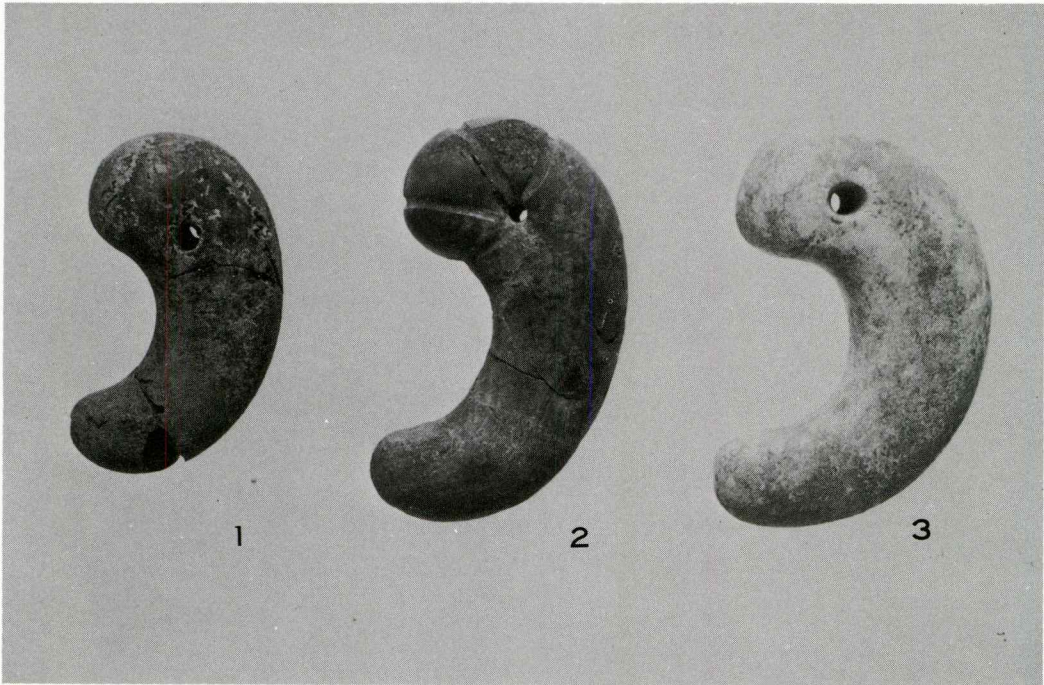
波文帯三角縁三神三獸鏡



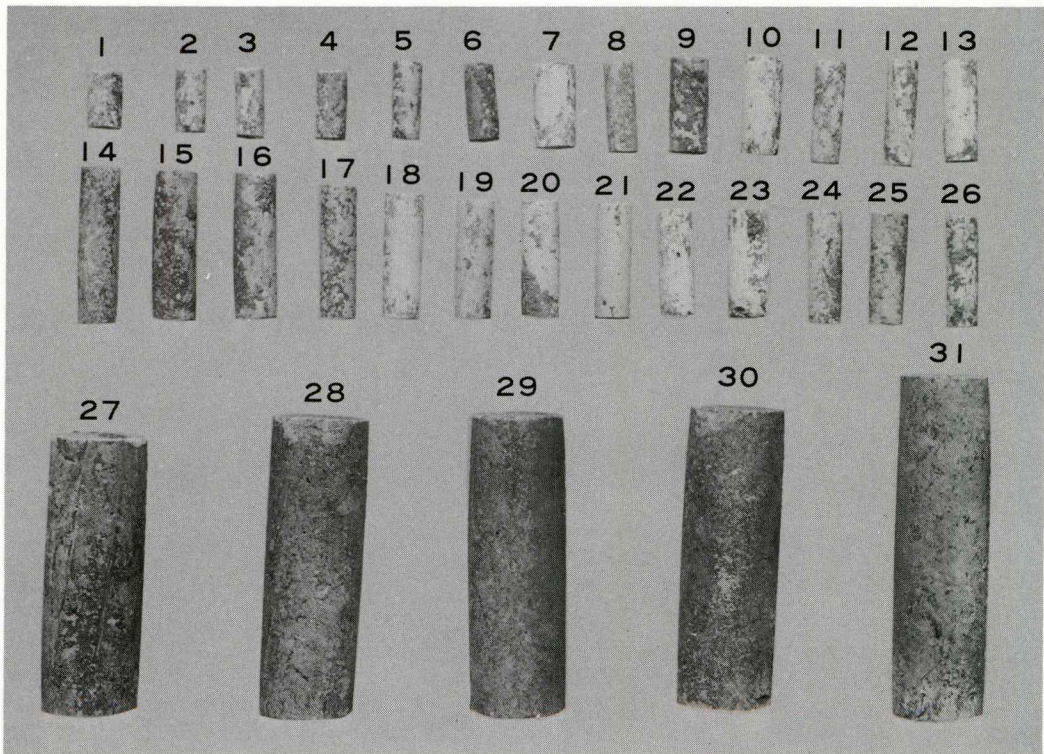
変形四獣鏡



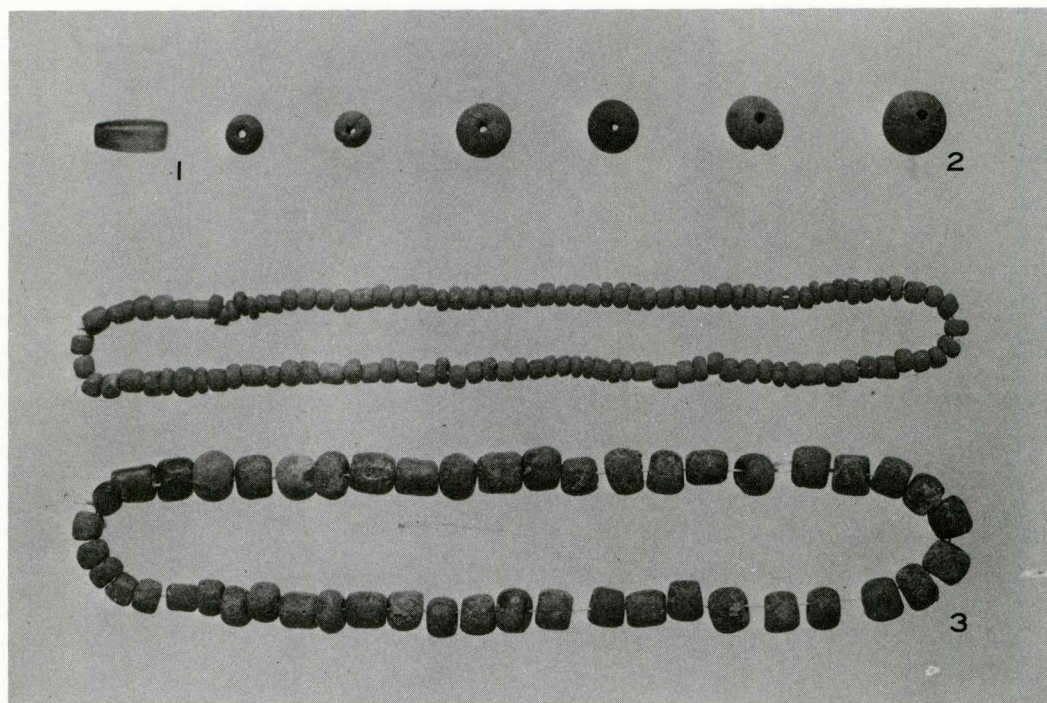
内行花文鏡



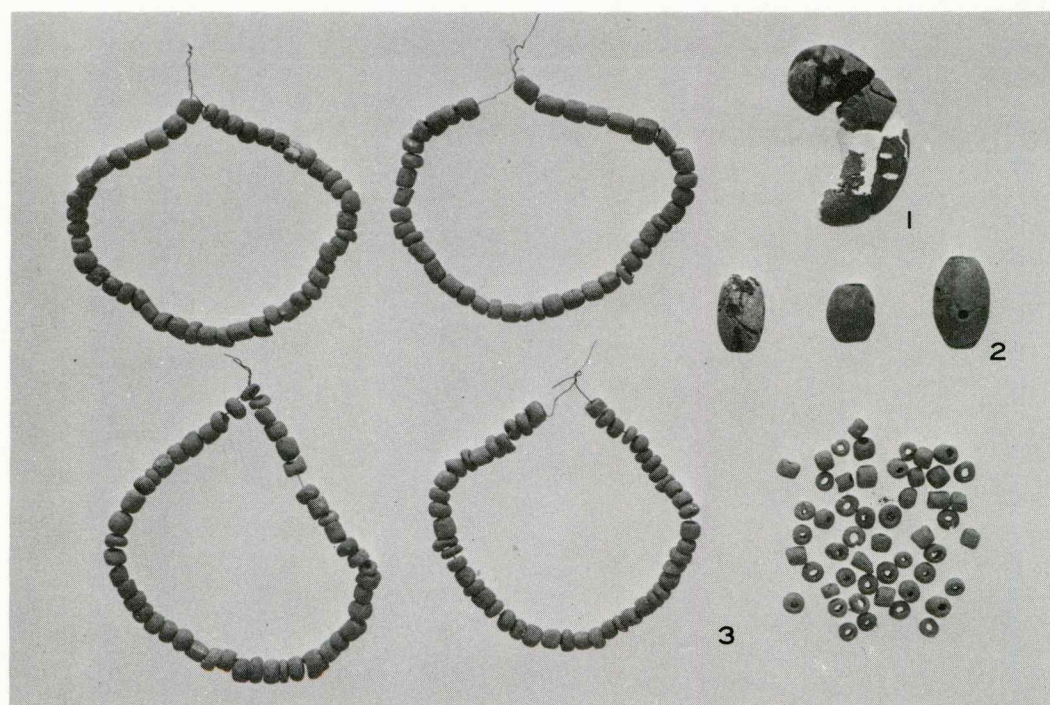
1. 勾 玉



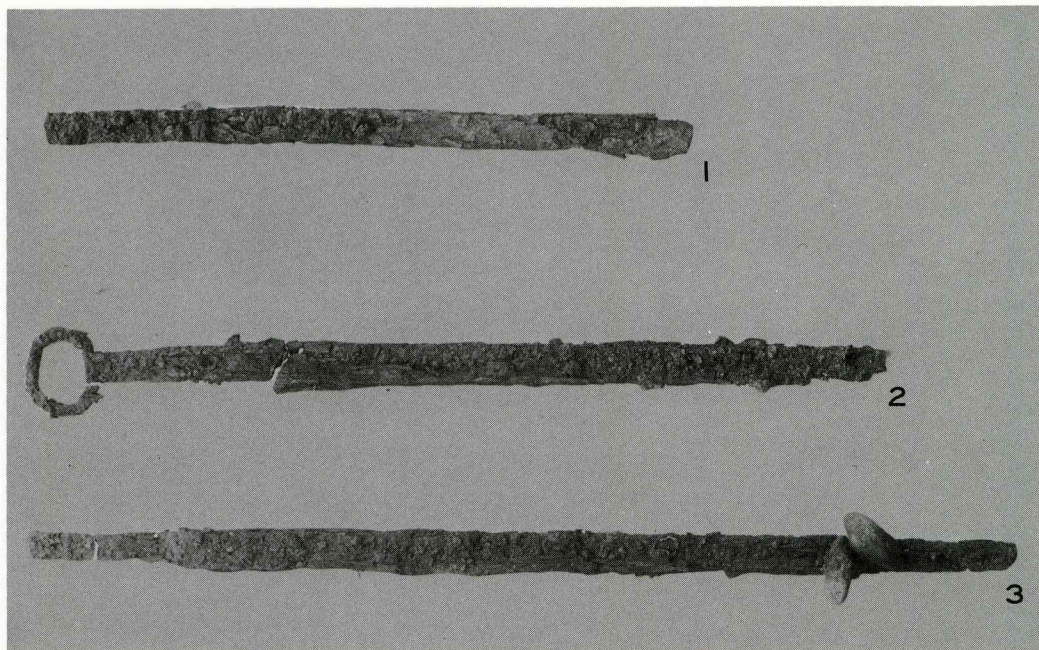
2. 管 玉



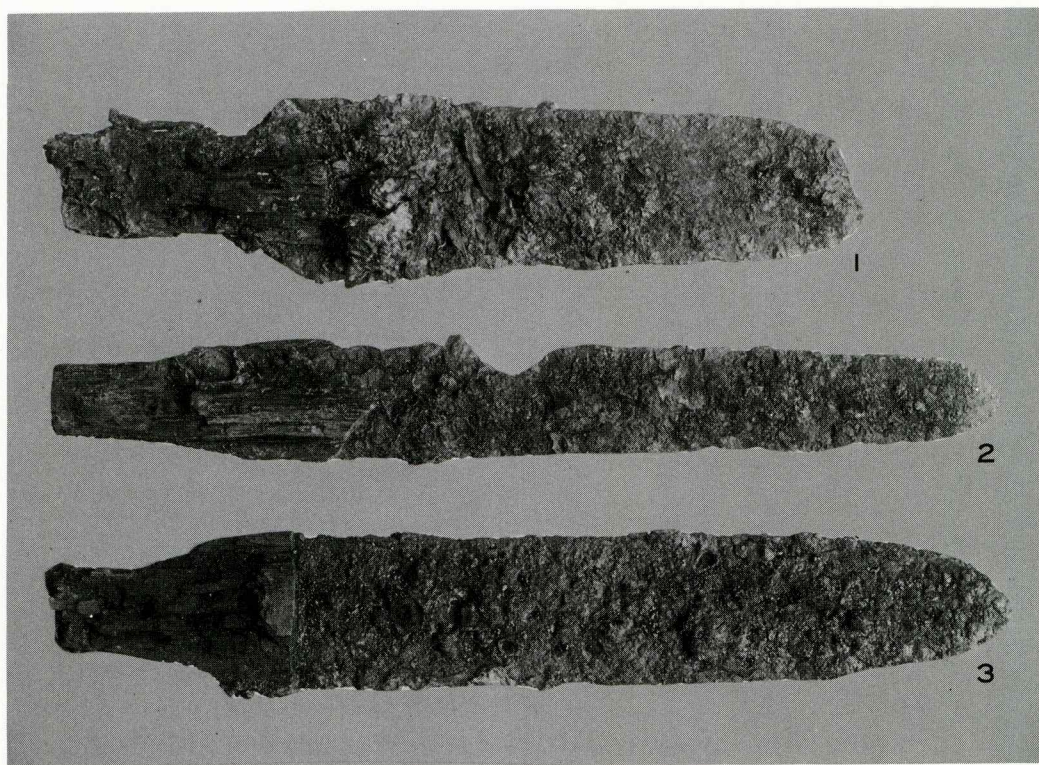
1. 管玉・丸玉・小玉



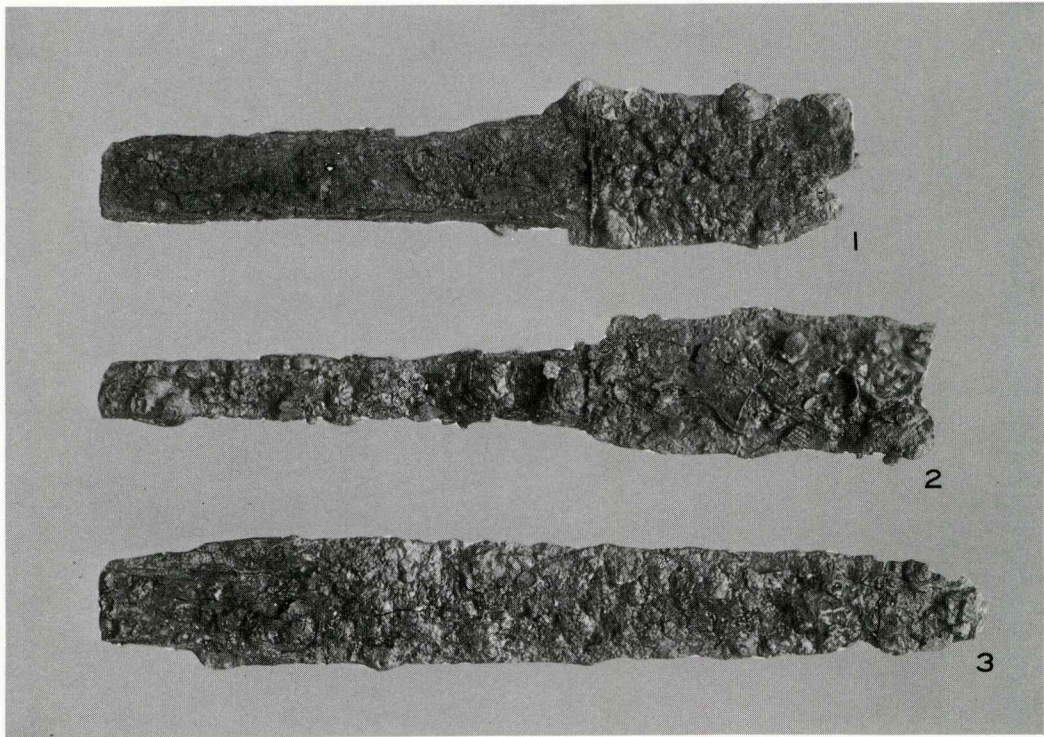
2. 勾玉・棗玉・小玉



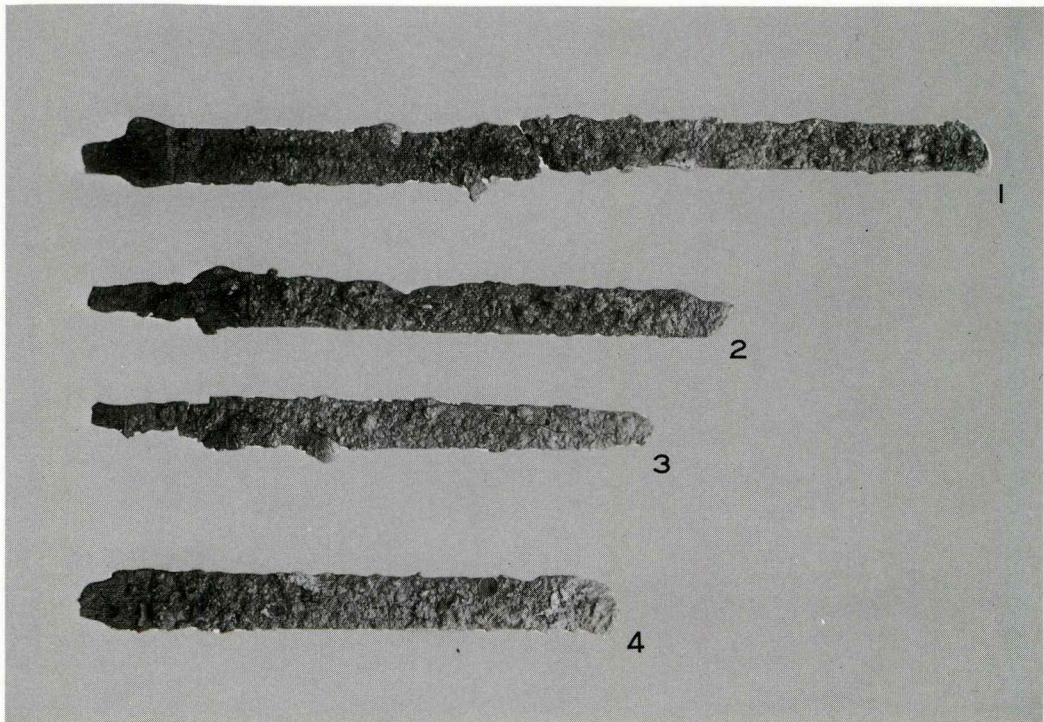
1. 大 刀



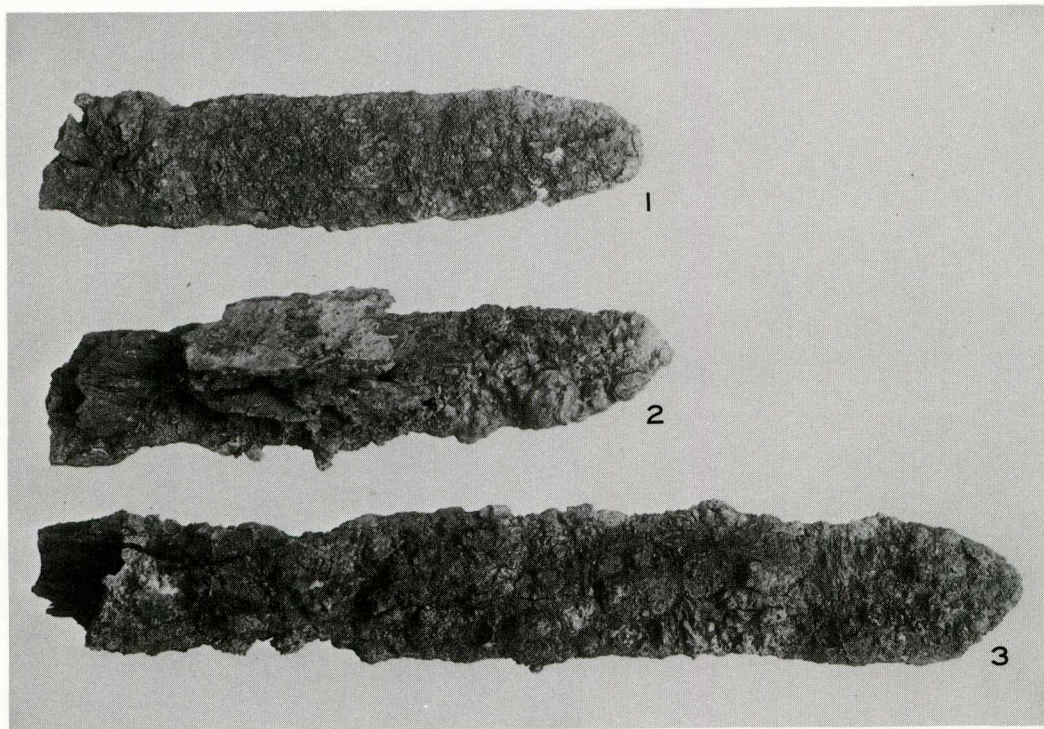
2. 劍



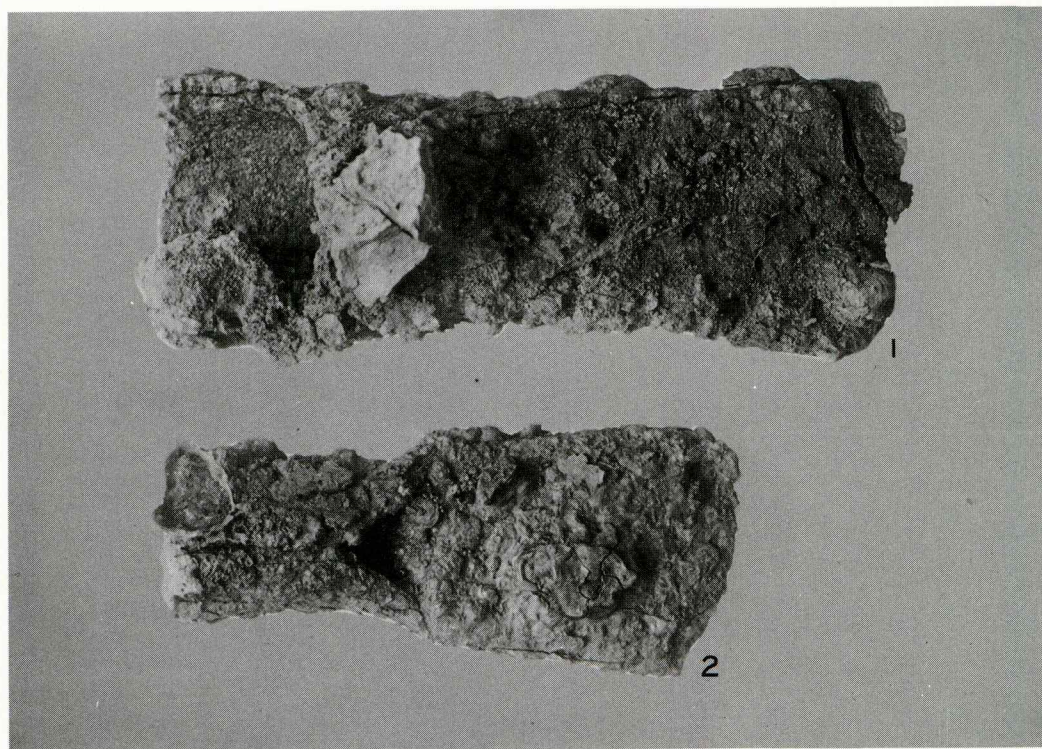
1. 劍



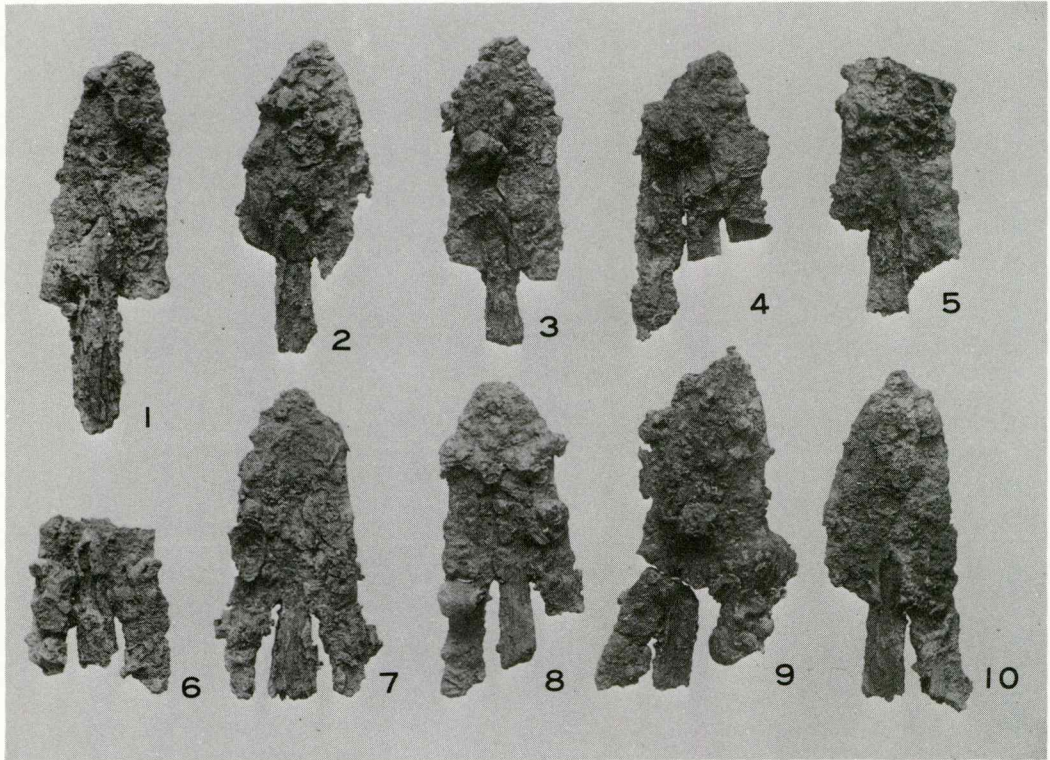
2. 劍



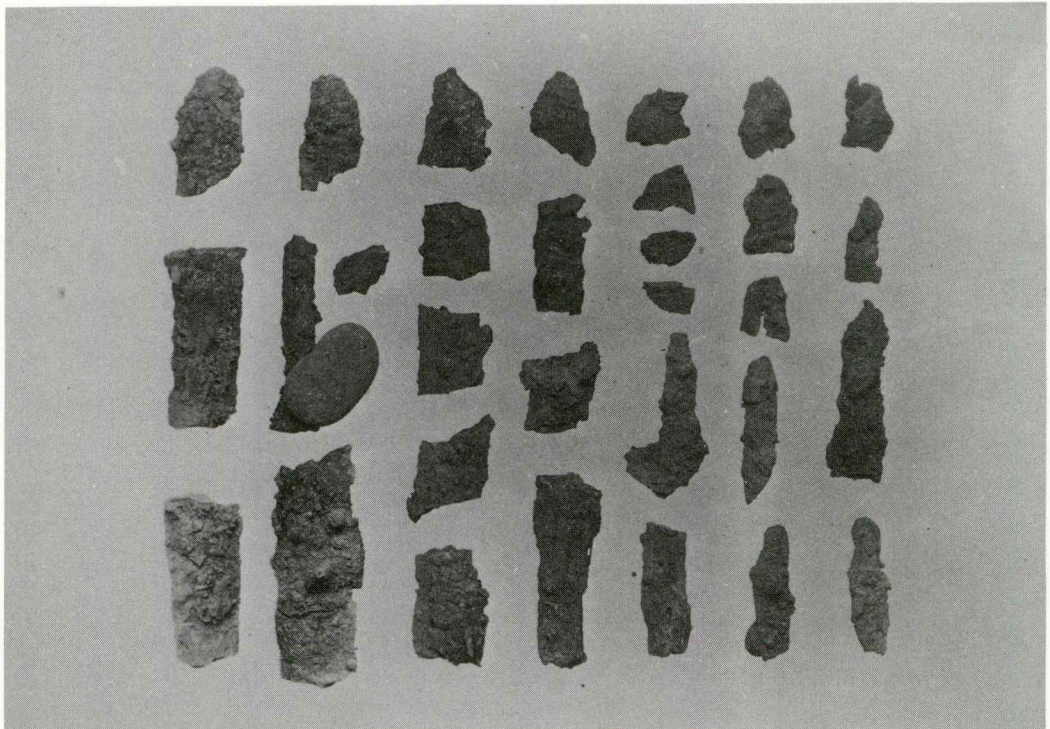
1. 剣と鉞(3)



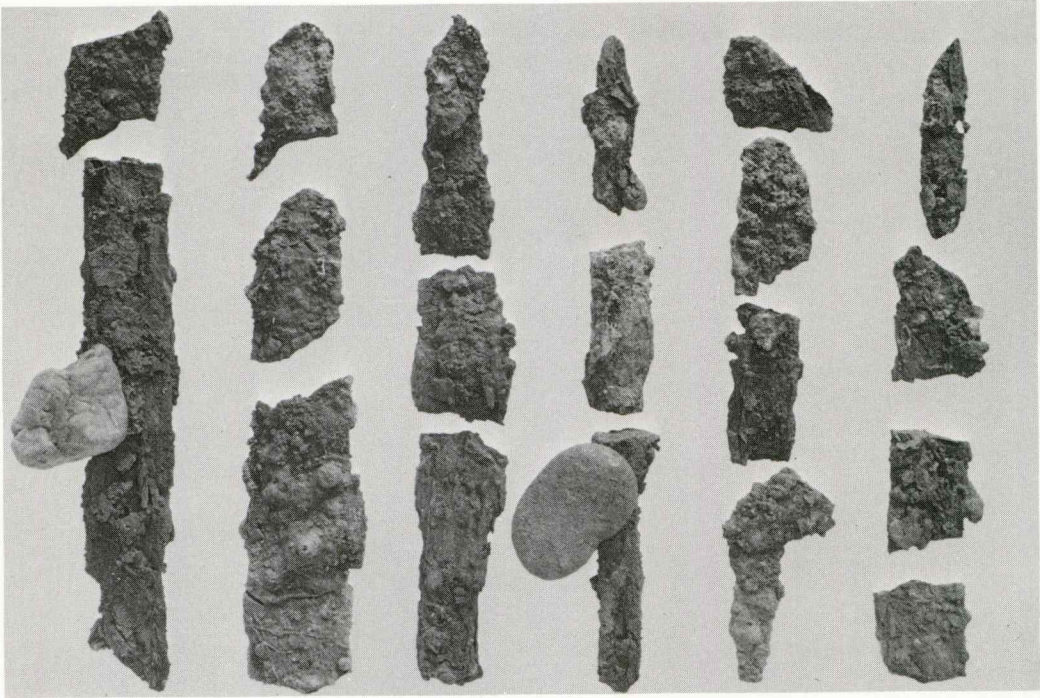
2. 鉄斧



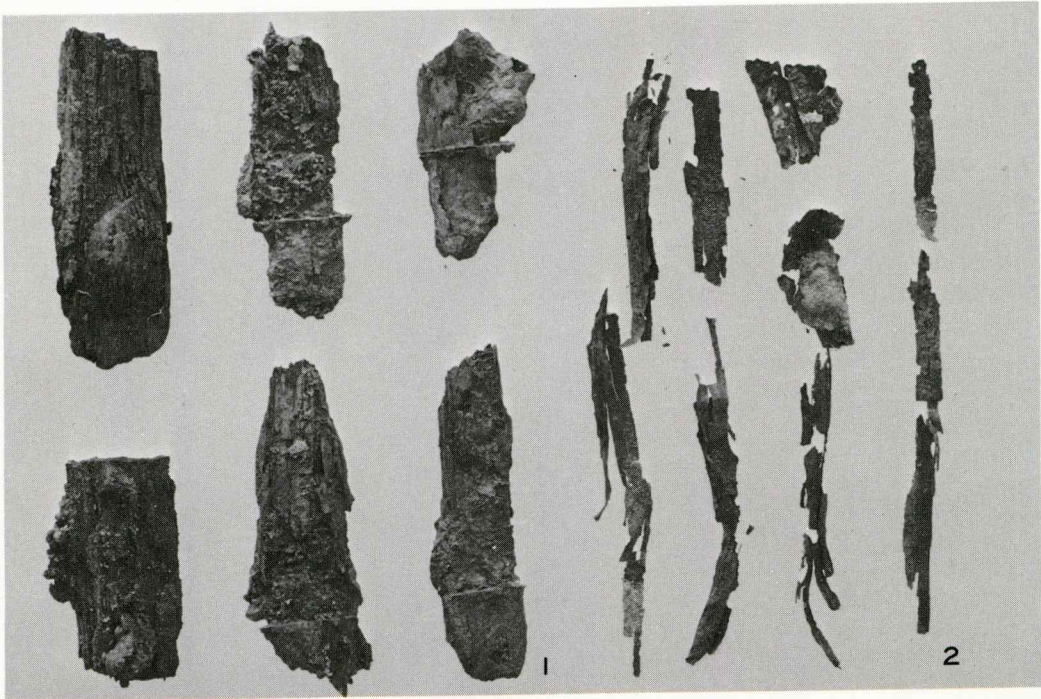
1. 鉄 鍬



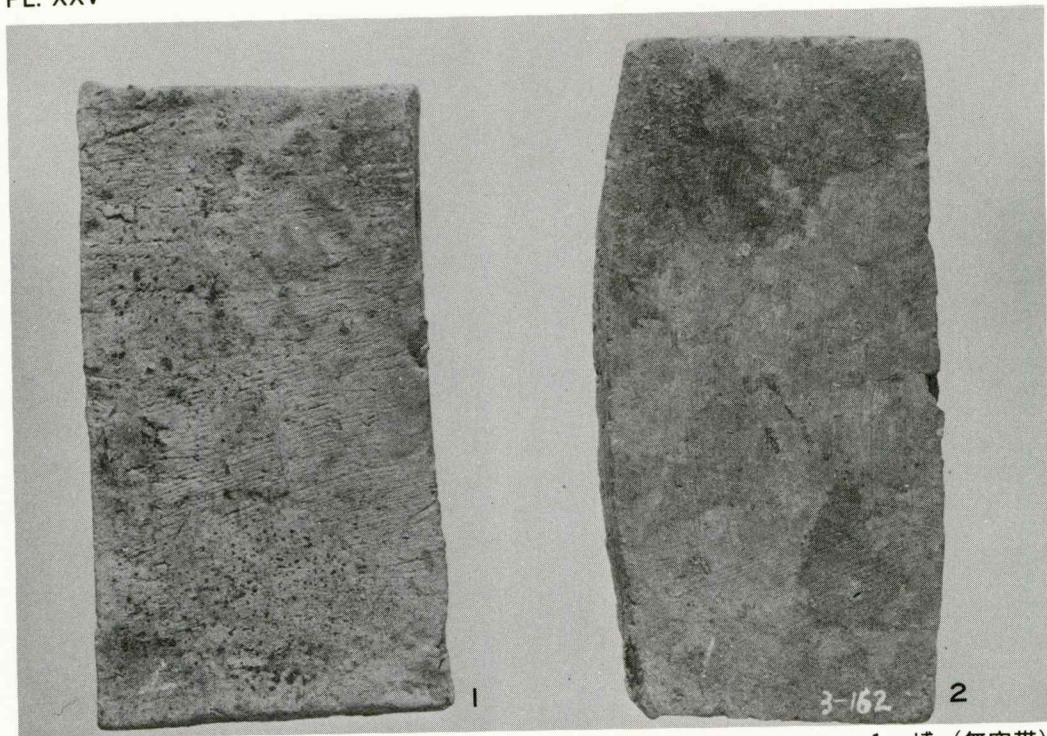
2. 劍 (破損品)



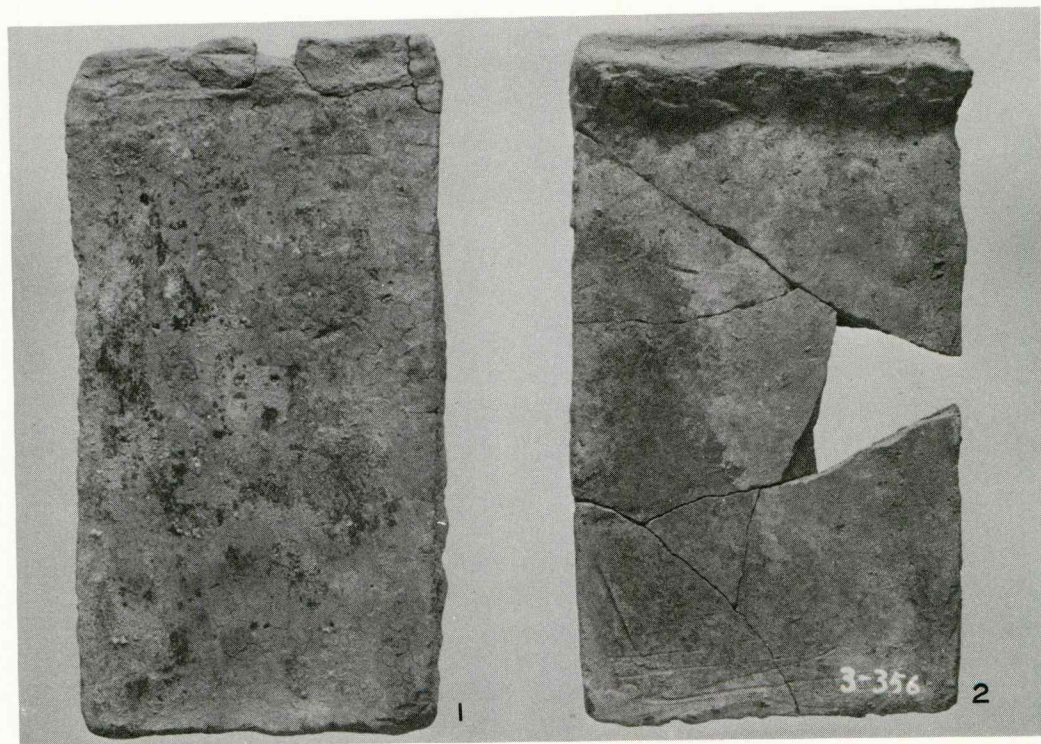
1. 剣(破損品)



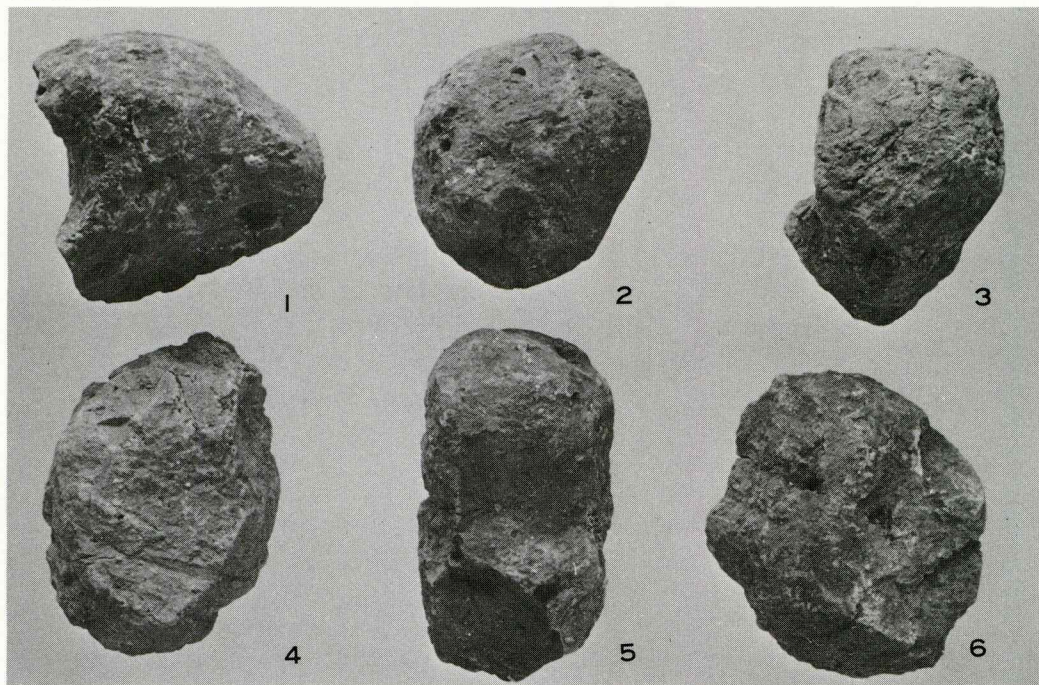
2. 剣と木片



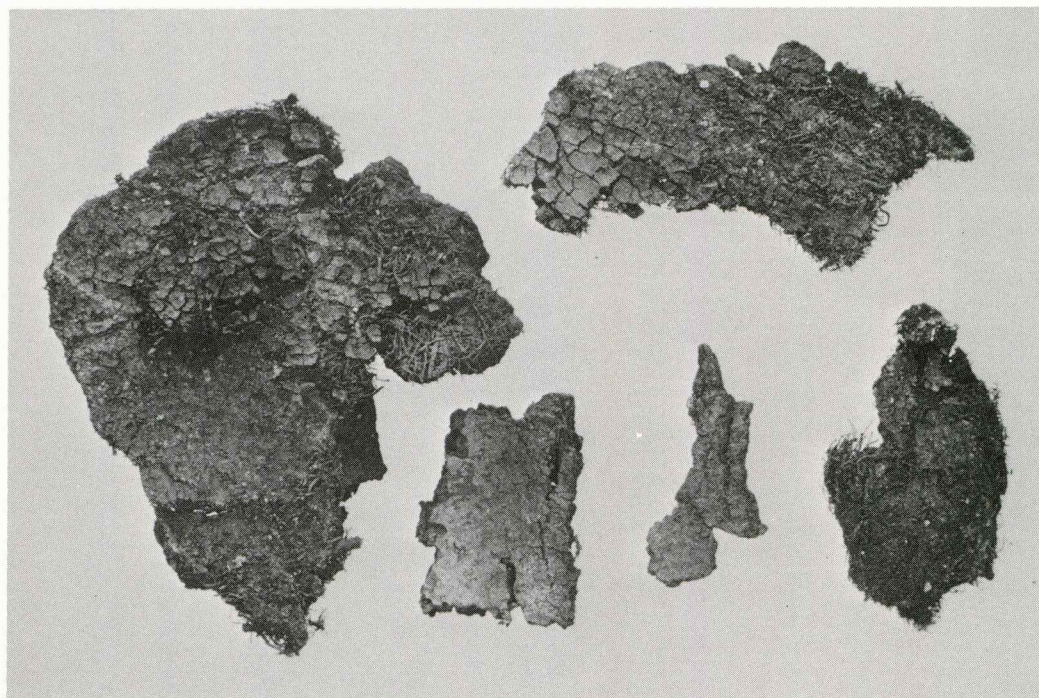
1. 埴 (無突帯)



2. 埴 (有突帯)



1. 粘土塊



2. 織布片